

inverFLOW^{PLUS}



A NEW STANDARD FOR POOL PUMPS

Madimack's inverFLOW PLUS is the next evolution in pool pump technology, delivering enhanced power and superior performance alongside the energy-saving benefits of full-inverter technology.

Operating whisper-quietly at speeds as low as 33dB, it features Wi-Fi connectivity for effortless control, Skimmer Mode for a pristine pool surface, dual voltage compatibility, and a market-leading 5-year warranty. The inverFLOW PLUS sets a new benchmark in efficiency, reliability, and convenience.



InverMAC Technology

Enhanced inverter motor for efficient performance and motor speed control



DC Brushless Motor

Permanent magnetic motor for long lasting energy efficiency



Advanced Sound Suppression Technology

Quiet operation down to 33 dB



4 Timers For Daily Operation

Full control capabilities, with multi speed and multi timer function



Skimmer/Boost Mode

Activates for 5 minutes every hour to optimize surface cleaning efficiency



Active Energy Monitor

Monitor and manage operation efficiency



Running Capacity From 30%~100%

Full inverter technology for maximum control—30%–100% set points



Wi-Fi Capabilities

Control your pump operation remotely



Dual Voltage

Enabling flexible installation and ensure consistent performance regardless of the voltage

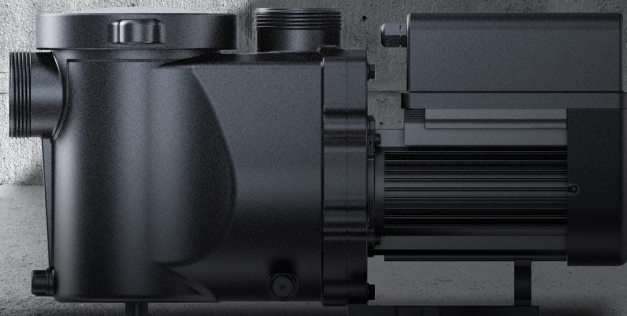


madimack

Powered by

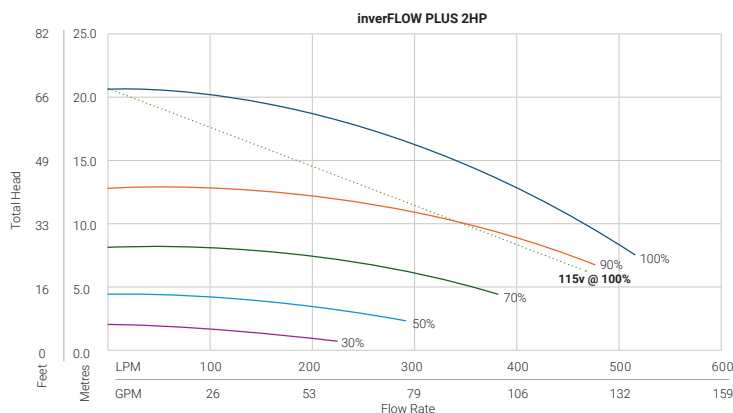
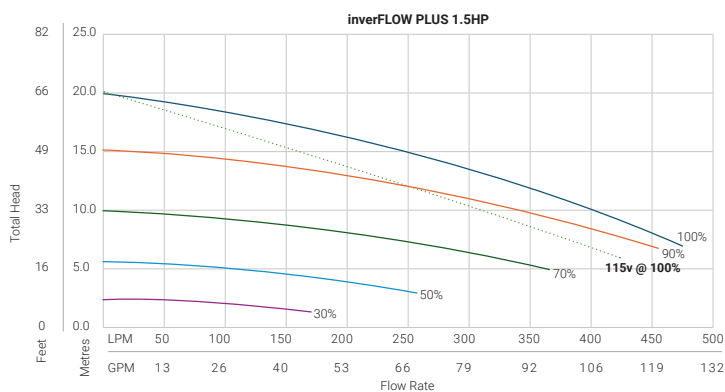
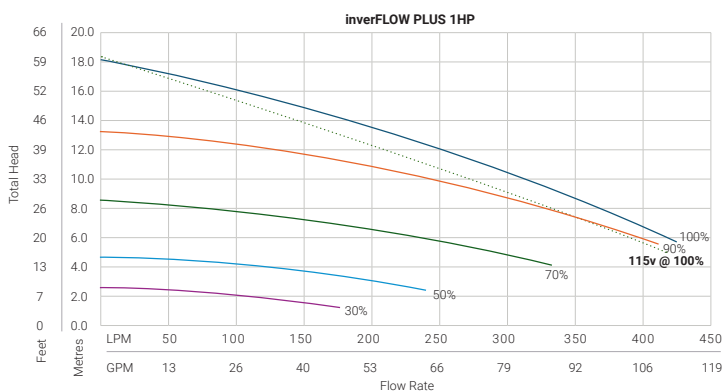


TECHNICAL PARAMETERS



MODEL	InverFlow Plus 1 HP Dual Voltage Inverter VSP	InverFlow Plus 1.5 HP Dual Voltage Inverter VSP	InverFlow Plus 2 HP Dual Voltage Inverter VSP
Power			
Voltage range	90-250v 50/60hz	90 - 250v 50/60hz	90 - 250v 50/60hz
Total Horse Power (THP)	1	1.5	2
Input kilowatt (kW)	1	1.35	1.8
Running Amps (115v/230v)	8.3 - 4.6	8.9 - 5.9	9.6 - 6.5
Flow			
Qmax - GPM	112	125	136
Qmax L/Min	424	473	515
Hmax - Feet	59	65	67
Hmax - Metre	18	20	20.4
Flow @ 26Ft (GPM)	97	119	132
Flow @ 8m (L/min)	367	450	500
Flow @ 33Ft (GPM)	79	105.7	123
Flow @ 10m (L/min)	300	400	466
Specifications			
Dimensions (Inch)	21" 7/16' x 6" 5/8' x 9" 15/16'		
Dimensions (mm)	590 x 255 x 325		
Packaging (inch)	23" 1/4' x 10" x 12" 3/4'		
Packaging (mm)	590 x 255 x 325		
Weight (lbs)	32lb	32lb	34lb
Weight (kg)	14.5kg	14.5kg	15.5kg
Pipe connections (inlet/outlet)	2" BSP		
Noise level 30% Speed	32.9	35.8	38.3
Noise level 100% Speed	56.1	56.7	57.4

*Specifications displayed refer to 230v supply and can vary with voltage fluctuations please visit www.madimack.com for further specifications.



madimack